



# Powering your Ambitions



LINK LIGHT  
**switchgear**  
INDUSTRIES L.L.C

[www.llsdubai.com](http://www.llsdubai.com) | [info@llsdubai.com](mailto:info@llsdubai.com)



## about us

Link Light Switchgear Industries (LLS) was established in 2006 as a subsidiary of the well-established Link Light Electrical Works LLC. The integrated engineering offices and assembly workshop of LLS are housed under one roof and cover an area of 12,000 sq feet in Al Qusais Industrial area Dubai, UAE. The company has achieved accreditation for its Quality Management System in accordance with the ISO 9001: 2015 standard.

## vision

To be the preferred solutions partner to the region's electrical industry through design, assembly and supply of premium quality panel-boards and circuit protection and control devices.

## mission

To provide dedicated services and high standard of workmanship that will improve the overall efficiency, reliability and protection of our customer's electrical power system.







## WHY LLS?

*..our efforts to deliver only the best*

We are a renowned name engaged in offering a wide range of Electrical Products & Services. Some of the reasons which have enabled us to excel in this domain are listed below:

- Customized solutions
- Total integrated manufacturing facility
- Large production capacity
- Timely delivery schedule
- On time service support
- Total Quality Management
- Easy payment modes and terms

The company's well-equipped workshop and excellent workforce enable us to turn around a project in order to meet any tight schedules. Every equipment we supply is assembled using sound engineering practices that are associated with IEC and British Standards for the manufacture of Low Voltage Switchgear & Control Panels. Our design and manufacturing techniques combine together at all times to guarantee the best quality at the lowest possible prices.

# PRODUCT RANGE

..designed to suit applications across a variety of industry sectors



we assemble using  
following brands:

**ABB**  **LARSEN & TOUBRO**

**Schneider Electric** **hager**

 **CIRCUTOR**

 **الفيئار**  
**alfanar**

- Main distribution Boards (MDB). 4000A (Form 2, 3 & 4)
- Sub Main distribution Boards (SMDB)
- Final Distribution Boards (FDB)
- Street Lighting Control Panels
- Motor Control Center (MCC)
- VFD and Soft Starter control panels
- HVAC control panels
- ATS panels
- Solar Distribution Panels as per DEWA Regulations
- Synchronizing Panels / Generator Control Panels
- Totalizing Panels up to 4000A
- Capacitor Panels
- Temporary Socket Panels

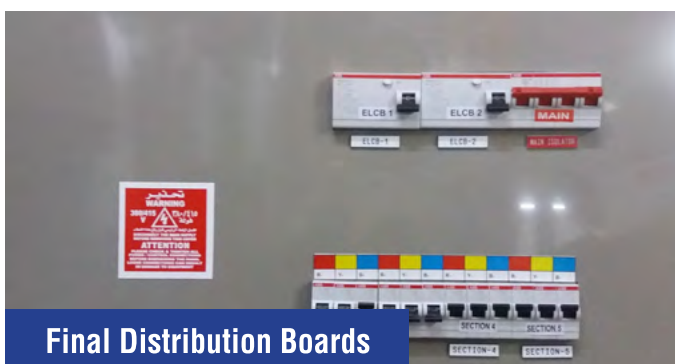


### MDB - Main Distribution Boards up to 4000A

- Conforming to IEC 61439-1&2
- Rated current starting from 400 Amps to 4000 Amps
- Manufactured to Form 2, Form 3 & Form 4 construction
- Designed for both withdraw able & fixed versions
- Ample cabling space for easy connections
- Top and bottom cable entry.
- Panels for front or rear access to suit application and site conditions
- Ingress protection : IP 31 & IP 54
- Floor mounting
- Maximum safety & reliability
- Full range of metering and instruments to meet customer requirements
- Customized design to meet end user requirements.

### Sub-Main Distribution Boards

- Conforming to IEC 61439-1 & 2
- Rated up to 1250A
- Manufactured to Form 2 & Form 4 construction
- Ample cabling space for easy connections
- Top and bottom cable entry.
- Options for Isolator and MCCB Auto or Non-Auto incomers
- Panels for front or rear access to suit application
- Busbar and incomer terminals are fully shrouded as per DEWA regulations
- Ingress protection : IP 31 & IP 54
- Floor or wall mounted with surface and flush mounting options
- Finish as per RAL 7032. Other finishes on request.
- Provision to add on Metering Kits and extension cable boxes.
- Option to build to customers special requirements
- Compact designs



### Final Distribution Boards

- Conforming to IEC 61439 - 1&2
- Current rating up to 160A
- Ingress protection : IP 41 & IP 54 as per IEC 61439-1&2
- Available in Row type distribution, pan assembly (single or multi split arrangement) in flush or surface versions
- Adopted range to local regulations, quality makes and easy installation



### Capacitor Banks

- Conforming to IEC 61439 – 1 & 2, IEC 61921
- Rated up to 600KVAR Bank
- Segregation Form 2
- Ingress protection up to IP54
- Wall mounting or floor standing
- With or without Harmonic Filters
- Top or bottom cable entry





### Synchronization Panel/Generator Control Panel

- 3-pole or 4-pole system as required
- Various combinations of load transfer by ACBs, MCCB's or Contactors
- Protection class up to IP 54
- Load sharing/load shedding
- Automatic and manual synchronizing
- Factory built to client's specifications
- Ratings up to 4000A
- Control functions available for engine monitoring, warm-up and cool down periods, emergency shutdown, multi attempt engine start control, engine test runs

### ATS (Automatic Transfer Switch) Panels

- Conforming to IEC 61439 - 1 & 2
- Segregation up to Form 2 (Other Form type for higher rating on request)
- Sheet steel and GRP Enclosures
- Ingress protection IP41 (Up to IP66 on request)
- Wall mounting or floor standing
- Top, bottom or special cable entry
- Front/ Rear cabling access
- Interlocks are ensured in electrical as well as mechanical.
- Special control systems to customers requirements
- Motorized ACB/ MCCB type Contactors
- Microprocessor based Automatic Controller type ATS



### Motor Control Center Panels

- Conforming to IEC 61439-1 & 2
- Rated up to 4000A
- Manufactured to Form 2 & Form 4 construction
- Designed for both withdraw able & fixed versions
- Top and bottom cable entry.
- Panels for front or rear access to suit application
- Full range of instruments and metering to customers' requirements
- Tailored Control using Contactor, DOL, Star Delta, Soft starter and variable speed drives
- Ingress protection : IP 31 & IP 54
- BMS and PLC integration
- Fire Alarm interfacing
- Floor mounting
- Maximum safety & reliability

### HVAC Control Panels

- Conforming to IEC 61439 - 1 & 2
- Segregation up to Form 2
- Sheet steel, Stainless steel, GRP Enclosures
- Ingress protection up to IP 54
- Wall mounting or floor standing
- Top, bottom or special cable entry
- Front cabling access
- Special control systems to customers' requirements with or without VFD
- Manual or Automatic operation



# MAINTENANCE CONTRACTS & SITE SERVICES

*..tailored to your requirements*



## SWITCHGEAR MAINTENANCE

Switchgear failure resulting in a partial or total loss of your electrical network has far reaching consequences. Production lines, data networks, and other equipment are disrupted, affecting productivity and health safety compliance in addition to financial loss and consequential repair costs.

LLS offer structured maintenance contracts tailored to each customer's requirements for all our equipment and for the systems provided by third-party suppliers

By maintaining plant and equipment in the optimum condition, their life should be maximized, and energy costs reduced. LLS provides the simplicity of having a single point of contact that takes care of all repairs and maintenance, orders parts, maintains records of warranties, reminds you when services are due and provides you with job feedback and reports.

Our dedicated team is ready to work with you to help your business, high-rise, rental property, shop front, or factory, run as efficiently as possible.

### Our maintenance services include:

- Annual Maintenance Schedules
- Preventative Maintenance
- Fault repairs
- Circuit testing
- Switchgear maintenance
- Capacitor Bank Maintenance
- ACB Maintenance of LV Panels
- RCD Testing

### SITE SERVICES

The following services, incorporated in our maintenance packages, are available individually to satisfy immediate requirements.

- Routine maintenance
- Injection testing
- Power monitoring surveys
- Inspection and cleaning
- Control system operation checks
- Thermal Imaging

## MAINTENANCE IS NECESSARY

Effective maintenance is essential for trouble-free continuous operation and to maintain design capability under emergency conditions. In normal switchgear operation, the mechanical devices deteriorate without regular operation and maintenance. This can lead to failure when they are required to operate under emergency conditions.

Electrical Maintenance services and preventative measures are vital to ensure your facility or workplace is safe and operating efficiently and effectively. We can provide a Preventative Maintenance Schedule, which assists in avoiding the expensive costs of repairs or replacements in the future.



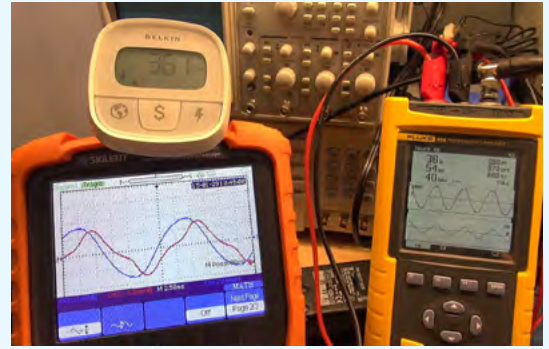


## POWER FACTOR CORRECTION & MAINTENANCE

Power Factor Correction is the process of maximizing the efficiency of an electrical system to deliver the most possible power as active power.

Power Factor Correction Advantages:

- Reduced demand charges
- Increased load carrying capabilities in existing circuits
- Improved Voltage
- Reduced Power losses in system
- Reduced Carbon footprint



Our routine Capacitor (P.F) Bank Maintenance covers the following:

- Ensure all fuses are not damaged
- Ensure all contactors are operational
- Ensure all discharge resistors are operational
- Ensure tightness of all electrical connections
- Remove all dust and deposit build-up
- Check and clean filters

*To learn more about our power factor correction services & how they can benefit your company, please contact us today.*



## THERMAL IMAGING AND POWER LOGGING

Thermographic Surveys and Inspections

Most commercial fires are the result of an electrical fault such as faulty wiring, overloaded switchboards, or just poor electrical design in the first place. A fire can be devastating for a business including the loss of the business, jobs, income, water, or stock damage and at best interruption.

LLS carries out surveys on switchgears, control panels, motors and controls and all accessible items of distribution equipment using infrared imaging to detect and locate faults which could lead to system failure or the initiation of any hazards and fire.

- In general Thermal Imager is used to:
- Identify "hot spots" in your Electrical System
- Formulate preventative maintenance programs
- Heating and Ventilation (HVAC) trouble shooting
- Industrial / Commercial Electrical Application such as:
  - The main switch and terminal
  - Distribution Boards
  - Terminal Chambers
  - Contactor, overloads and control relays
  - Reports made for each, complete with comments and recommended action.



# RECENT PROJECTS



2B+G+9 Building @ Muhaisanah Fourth  
Central Contracting Next Engg. Consultant



Dohler Middle East Freeman Contracting  
Consistent Engineering Consultants



Life Pharma FZE Freeman Contracting  
Archen



2B+G+14+Gym Building @ Al Barsha First  
Link Light Electrical Works Al Asri Engg  
Consultant



Jabel Ali Golf Resort Hotel Jabel Ali Hotel  
Link Light Electrical Works Llc



Kromberg & Shubert Middle East  
Freeman Contracting Jebel Ali Free Zone



Modern Ice Factory @ Dip Al Maeraj  
Contracting Architectural Design Unit



Proposed B+G+6+GYM+R Res. & Comm.  
Bldg. @ Al Warqa First Rimal Engineering  
Central Contracting



Astic Warehouse @ DIP



# OUR SISTER COMPANY

*..working together to suit every need*

**LINK LIGHT ELECTRICAL WORKS**, our sister company is fully certified to install or assist with any element of an installation from full contracting works to glanding and connecting single cables. Together we can offer supply, delivery and installation to suit every need.

Link Light Electrical is involved in most low voltage electrical aspects of commercial and industrial installations as well as residential developments. You can always count on us to do the job right. Because of our growth and success, we are able to provide a comprehensive list of electrical services. We strive to make sure all our jobs are done efficiently and safely.

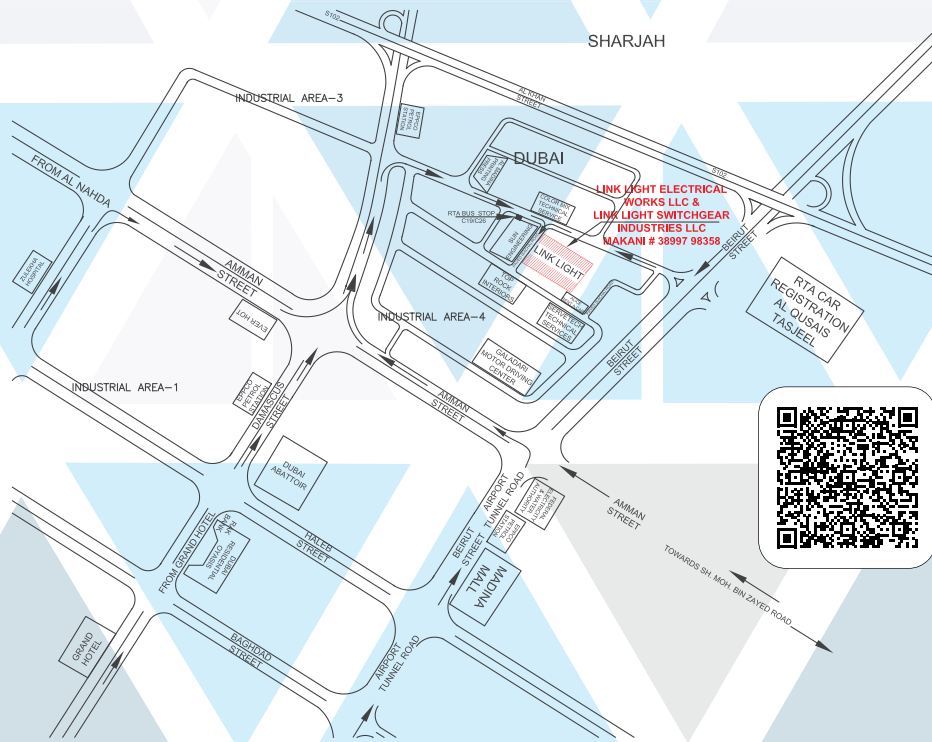
- Complete Electrical Design & Installation works
- L.V Switchgear Installation and Commissioning
- Power upgrade for existing facility in compliance with DEWA regulations.
- Design/Drafting Services
- Mains Cabling
- Power Distribution - Installation and Maintenance
- Lighting Dimming Control – Installation and Maintenance
- Installation of Motion/ Occupancy Sensors
- Exit and emergency supply and installation
- Earthing Systems
- Data/Voice Cabling works
- Uninterruptible Power Systems and related electrical systems for Data Centers
- Solar Energy Systems Installation & Maintenance

**LINK LIGHT**  
ELECTRICAL WORKS LLC  
*Solution for the bright side*  
Since 1994

P.O. Box: 86521, Dubai, UAE, Tel: +971 4 2675071  
[www.linklightuae.com](http://www.linklightuae.com)







**LINK LIGHT**  
**switchgear**  
INDUSTRIES L.L.C



شركة لينك لايت  
**سويتش جيار**  
اندسترز ش.ذ.م.م

P.O Box: 96984, Dubai, UAE, Tel. No. 04 2675081/91, E-mail: info@llsdubai.com | www.llsdubai.com